

Epworth Sleepiness Scale Distribution among 10755 people (aged 40+) at primary healthcare checkup and 3252 people at Sleep Clinic

Cugy Didier^{1,2}, Paty Jacques², Lenain Jean-Luc³

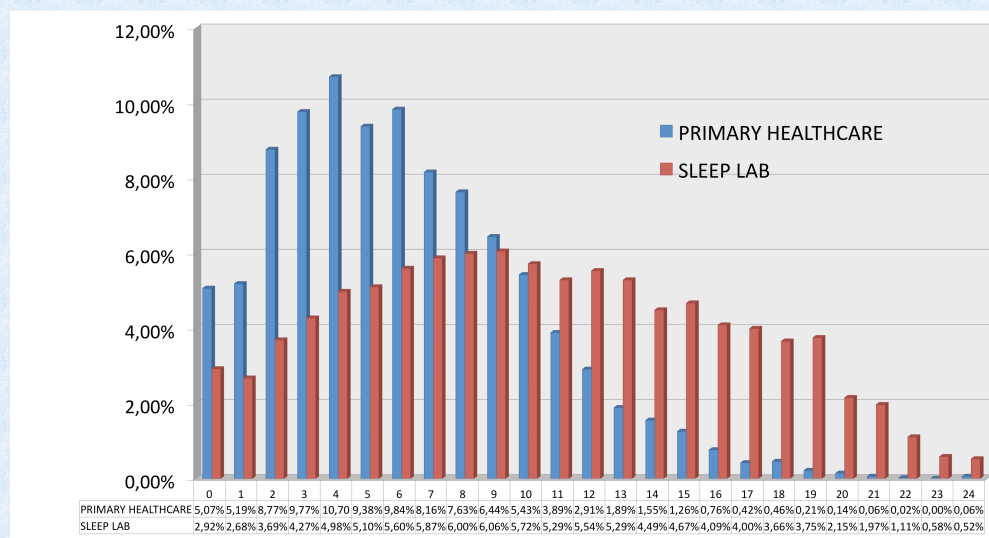
¹ Pavillon de la mutualité – Bordeaux – France

² CHU Pellegrin – Bordeaux – France

³ Centres d'examens de santé – CPAM de la Gironde – France

Epworth Sleepiness Scale is usually used for sleepiness screening. We report the distribution of responses among screening at Bordeaux and Cenon primary healthcare centers in Gironde France and at our Sleep Lab

EPS score was performed in patients older than 40 years old. We report here Epworth Sleepiness Scale distribution in outcome patients at the Primary Healthcare Centers (10755 people) and in patients investigated at the Sleep Clinix (3252)



Distribution of score is reported in the table. Differences between the two populations are observed (Khi... Distribution does not follow a « Normal » law in the two cases. There is also significant difference between the two populations ($\chi^2 p < 0.01$).

CONCLUSION :

1. We observe differences in Sleepiness complaints between General Population and Patients which are driven to Sleep Clinic by their referent physician
2. In the General Population, high number of patients with EPSS > 7 (33.12%); > 10 (13.61%); > 14 (3.38%), showing the great number of patients where Sleepiness has not previously been recognized in Internal medicine.

Contacts : didier.cugy@chu-bordeaux.fr , jacques.paty@u-Bordeaux2.fr